

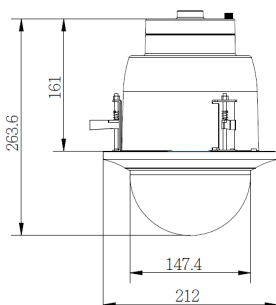
2MP Low Light In Ceiling PTZ Plenum Dome Camera SY-ICDPTZ30-S-LLU

The Synectics Low Light In Ceiling PTZ Camera matches great picture performance with an ultra-small in ceiling plenum housing.



The Synectics 2MP Full HD multi-stream PTZ dome IP camera is equipped with a Sony Exmor™ progressive scan CMOS sensor providing outstanding video resolution, and the capability to stream H.264 and H.265 simultaneously.

The in ceiling dome provides 1080p HD 50/60fps streaming or true WDR at 25/30fps. Coupled with its 30x AF zoom lens, it is capable of viewing subjects over long distances with ease. It has an ultra-small in ceiling mount that makes it the ideal choice where multiple views are required.



HD 1080P	REAL TIME	ONVIF	INTELLIGENT EDGE RECORDING
60 FPS	LOW LIGHT	30x ZOOM	BACKFILLING
H.264 H.265	TWDR	REMOTE AF / ZOOM	POWER FAILOVER
A-F	AAC		

Specifications

CERTIFICATIONS / RATINGS		[OPTIONS]
KC Certification	Clause 3, Article 58-2 of Radio Waves Act.	
CAMERA		SY-ICDPTZ30-S-LLU
Image Sensor	1/2.8" Sony Progressive CMOS	
Effective Pixels	1945 (H) x 1097 (V)	
Resolution	H.265 / H.264 / MJPEG Full HD 1080p / SXGA / HD 720P / XGA / SVGA / D1 / VGA / CIF / QVGA	
Min Illumination Color	0.01 Lux	
Min Illumination B&W	0.002 Lux	
Shutter Speed	1 ~ 1/10000 sec	
LENS		
Lens Mount	N/A	
Lens	30x AF / 4.3-129 mm	
FOV	59° (Wide); 2.4° (Tele)	
F Number	F1.6 (Wide)	
P Iris	Y	
Focus Mode	Auto, Push AF, Manual, Zoom Trigger	
Digital Zoom	10x	
PTZ OPTIONS		
Pan Travel	360° Endless	
Tilt Travel	-10° ~ 190°	
Manual Speed	0.1° ~ 90° / Sec	
Presets	256	
Preset Accuracy	0.225°	
Preset Speed	Pan: 9° ~ 400° / Sec, Tilt: 7° ~ 300° / Sec.	
Sequence	8	
Auto Pan	4	
Cruise	8	
Proportional Pan / Tilt	On / Off (Pan and tilt speed proportional to zoom ratio)	
Home Function	Preset / Sequence / Auto Pan / Cruise	
Auto Flip	Mechanical / Off	
Image Rotation	Mirror / 0° / 90° / 180° / 270°	
STREAMING OPTIONS		
Compression	H.265 / H.264 / MJPEG	
ONVIF Profile	G / M / S / T support	
Streaming Support / Encoding Channels	Up to Quad Stream support	
Stream	NTSC: H.265/H.264 1080p @60fps + H.265/H.264 720p @30fps PAL: H.265/H.264 1080p @50fps + H.265/H.264 1280 X 1024 @25fps or NTSC: H.265/H.264 1080p @30fps + H.265/H.264 1080p @30fps PAL: H.265/H.264 1080p @25fps + H.265/H.264 1080p @25fps	
Stream 1 Max Resolution and Max FPS	NTSC: H.265/H.264 1080p @60fps PAL: H.265/H.264 1080p @50fps	
Stream 2 Max when Stream 1 is set to Max Resolution and FPS	NTSC: H.265/H.264 720p @30fps PAL: H.265/H.264 1280 X 1024 @25fps	
Stream 1 "Standard" Resolution and FPS	NTSC: H.265/H.264 1080p @30fps PAL: H.265/H.264 1080p @25fps	
Stream 2 Max when Stream 1 is set to "Standard" Resolution and FPS	NTSC: H.265/H.264 1080p @30fps PAL: H.265/H.264 1080p @25fps	
Min/Max Bitrate	64 / 10240 (kbps)	
Max Number Unicast Streams	16	

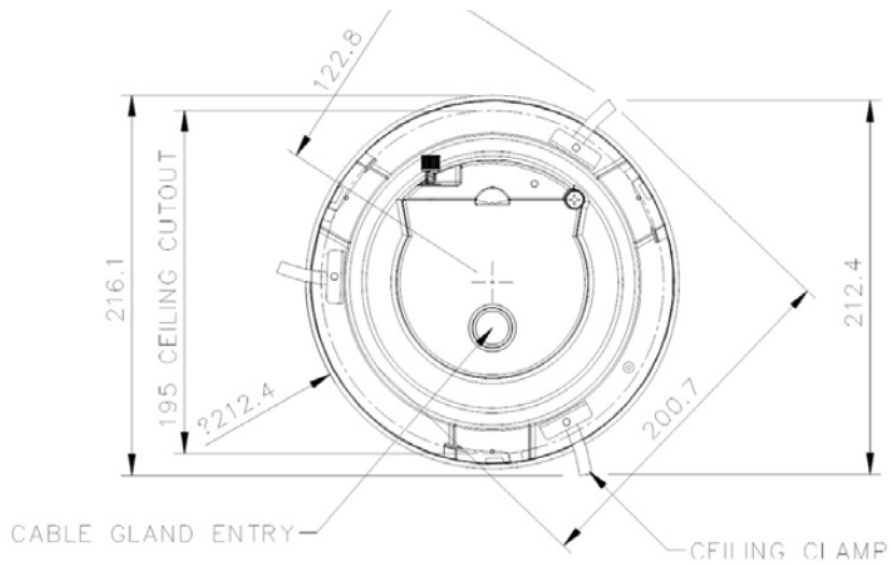
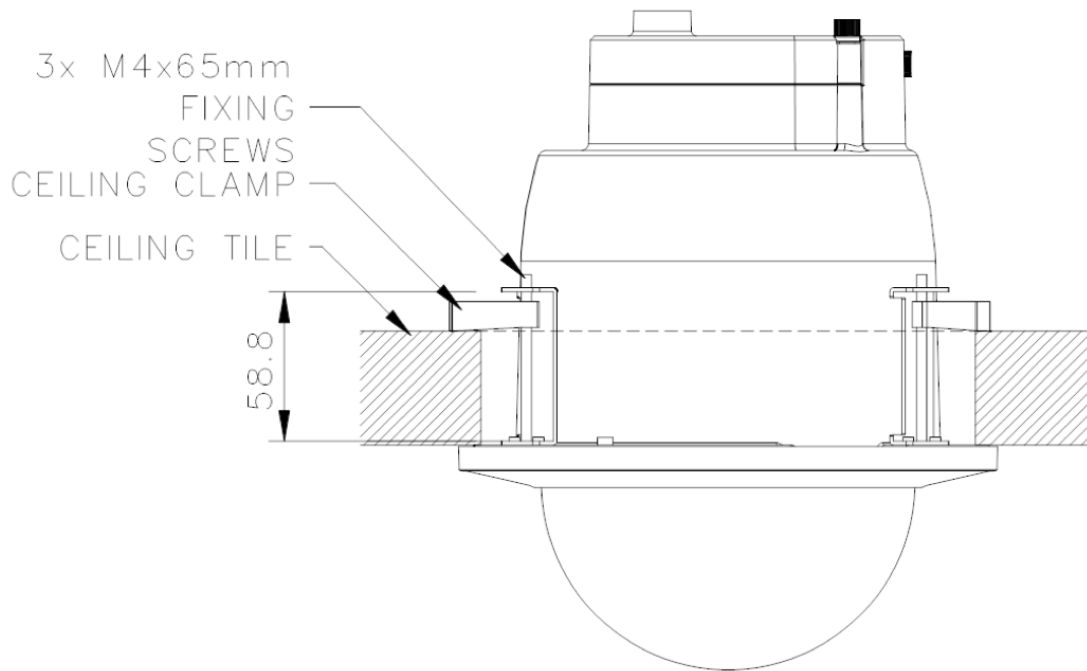
OPERATION	
ICR	Auto / On / Off / Smart
LED Numbers	N/A
LED Distance	N/A
White Balance*1	Auto / ATW / Smart / One Push / Smart One Push / Manual
NR	2D / 3D / Color
BLC	Y
WDR	TrueWDR (Up to 120 dB)
DIS / EIS	Y
Motion Detection	On / Off / Schedule
Privacy Mask Type	8 Colors / 5 sets
Tamper Alarm	On / Off / Schedule
I/O Connector	4 of 9 Pin Terminal Block
Audio In	G.711 / G.726 / AAC / LPCM
Audio Out	G.711 / G.726 / AAC / LPCM
Audio Sample Rate	ACC: 48000 / Other: 8000
Analog Out	Y
Heater	N/A
Fan	N/A
Alarm Input	4 Sets / 5V 10kΩ Pull Up
Alarm Output	2 Set / Relay output, max. 120mA DC 400V / 120mA AC 250V
Event Notification	HTTP / FTP / SMTP
Synectics Intelligent Edge Recording*1	Y
Onboard Storage	Up to 60 Seconds (Synectics Intelligent Edge Recording only)
SD Card Support	micro SD / SDHC / SDXC Card Support
Ethernet Connector	RJ-45 Solid
Power Connector	3 Pin Terminal Block
Protocol	ARP, PPPoE, IPv4/v6, ICMP, IGMP, QoS, TCP, UDP, DHCP, UPnP, SNMP, SMTP, RTP, RTSP, HTTP, HTTPS, FTP, NTP, DDNS, ONVIF G, ONVIF M, ONVIF S, ONVIF T
Security	User Authentication / HTTPS / IP Filter / IEEE 802.1X

ENVIRONMENTAL	
Operating Temperature	-25°C ~ 50°C (-13°F ~ 122°F)
Storage Temperature	-20°C ~ 70°C (-4°F ~ 158°F)
Humidity	10% ~ 90%, No Condensation
Vandal Resistant	N/A
IP Rating	N/A

GENERAL	
Power*2	AC24V / PoE(802.3at) / DC12V
Power Priority 1	AC24V
Power Priority 2	PoE
Power Priority 3	DC12V
Power Failover	AC to DC / DC to AC PoE to DC / DC to PoE AC PoE combination not supported
PoE Classification	Class 4
Power Consumption (Total Unit)	Max: 25.4W
Dimensions	ø 212 x 264 mm / ø 8.35 x 10.36"
Weight	2.3 kg (5.11 lb)
Certification	CE / FCC

NOTE: *1 Features are related to the firmware version. Please contact your Synectics representative for more details. *2 If multiple power inputs are to be used simultaneously on the camera (such as AC power + PoE or DC power + PoE) all power supplies must be isolated power supplies.

Diagrams



Cut hole size: 195 mm

Cut hole size: 195 mm